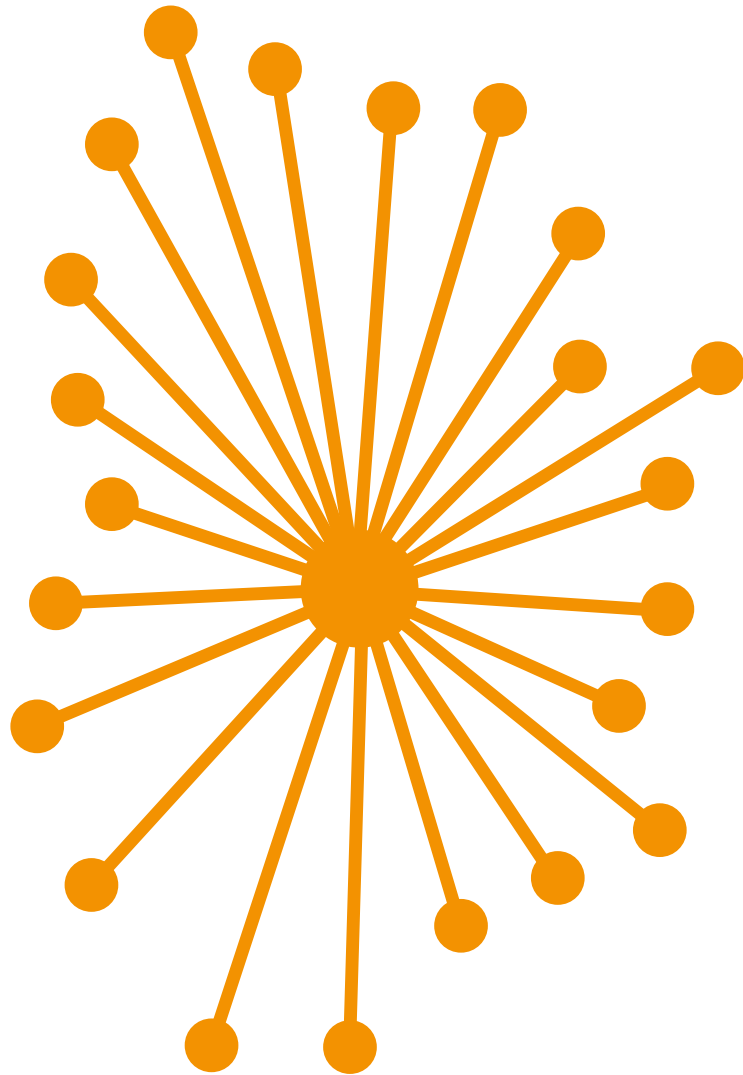


Commissioning DALI-2 APC Control Pro II



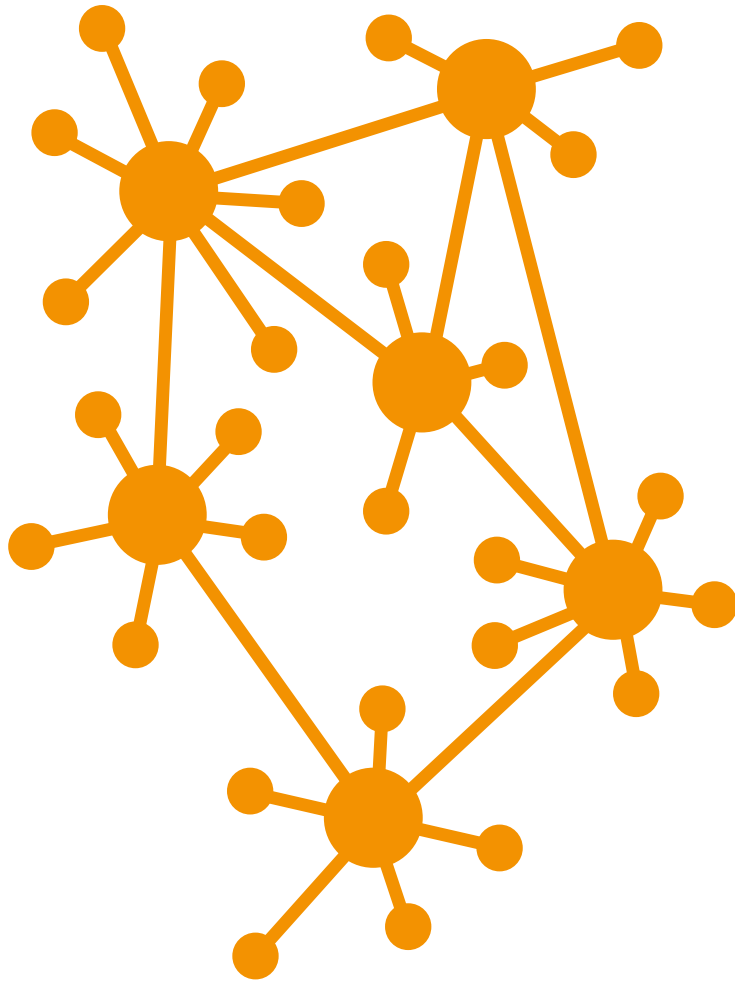
Fundamentals of different networks



Centralized networks

“Centralized” networks enable a central device to communicate with many other devices. Due to their geometry, they are also referred to as “star systems.” In a centralized system, the “intelligence” is located in the main device. Example: a DALI lighting management system with central control.

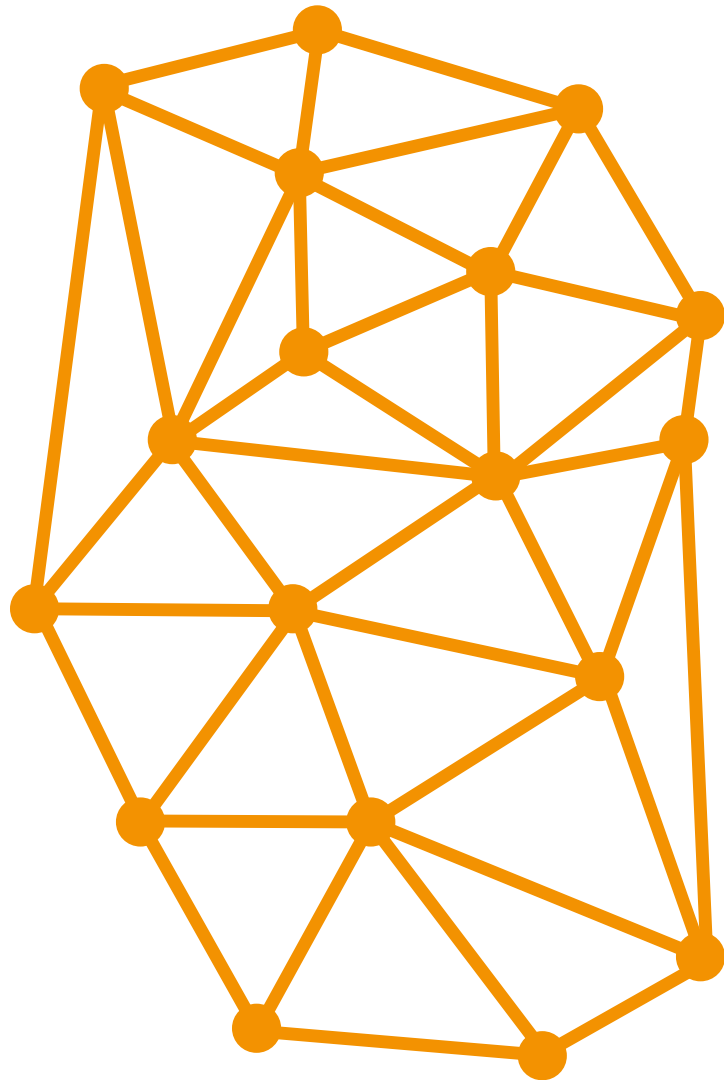
Fundamentals of different networks



Decentralized networks

In a “decentralized” network, the central device or “intelligence” is distributed across several or many devices, which are then connected to each other and communicate with the other devices.

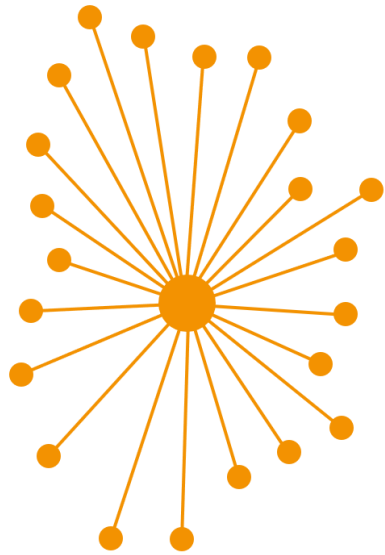
Fundamentals of different networks



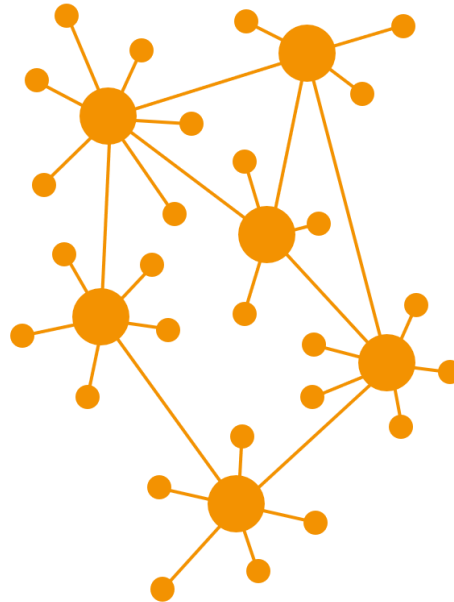
Distributed networks

A “distributed” network has no central devices. The ‘intelligence’ is located in all devices. All devices have similar performance, are autonomous, and “make their own decisions.”

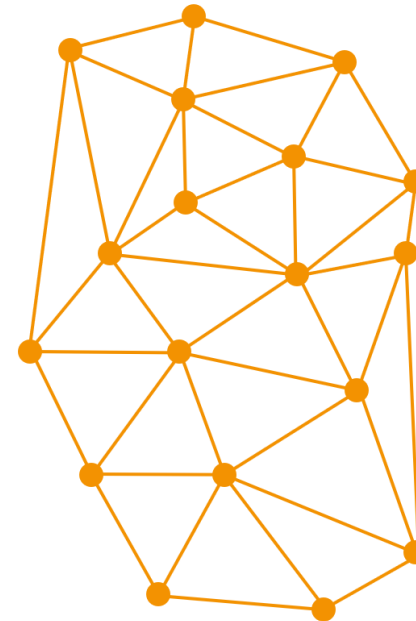
 **Bluetooth[®]**
MESH



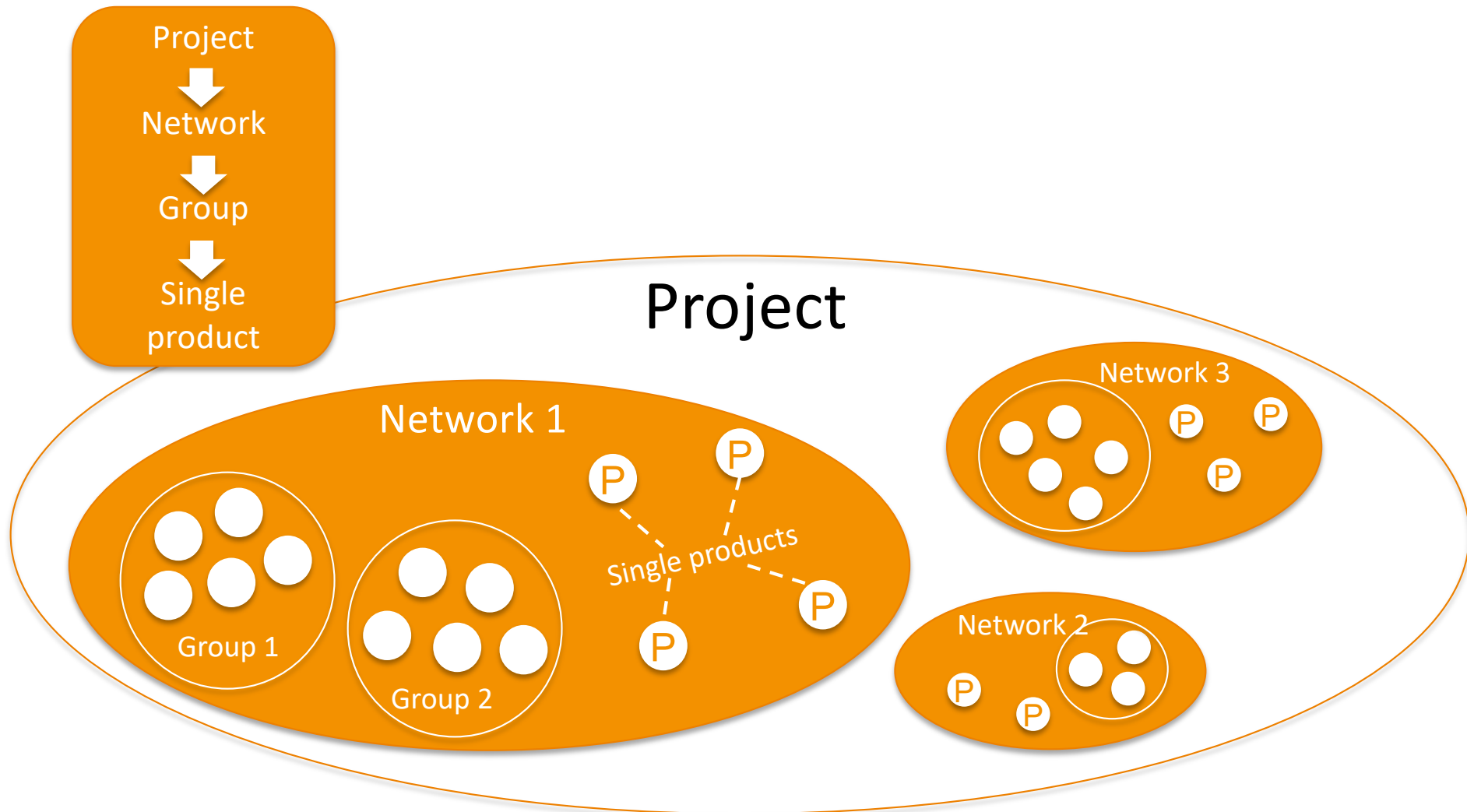
DALI system →



DALI-APC in Mesh

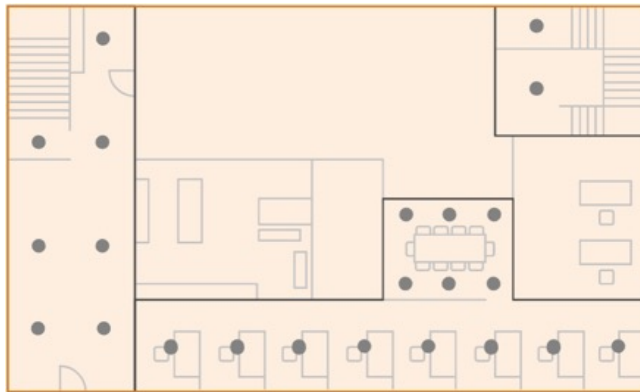


← Bluetooth-Mesh





Project



Multiple networks are logically grouped together in the project. This serves to simplify the structure of larger construction projects. For example, several networks in a building or building complex can be combined in one project. Several users can be added to a project so that all users have access to the networks in that project. The project is not part of the Bluetooth network—it merely serves as a collection of networks and is backed up in the Steinel Cloud.



Network



Steinel products can be added to Bluetooth mesh networks. A network can consist of several (but no more than 100) Steinel products.

Networks are spatially connected, and within a network, the products communicate with each other (e.g., on one floor), but not between different networks (e.g., on multiple floors).



Groups



Steinel products can be assigned to a group within a network (e.g., hallway, office, stairwell). The products in a group behave homogeneously—for example, all lights switch on at the same time when at least one of the sensors in the group detects movement.

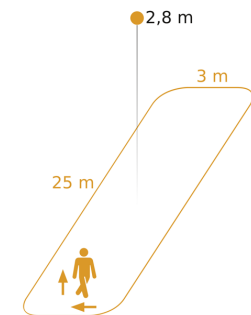
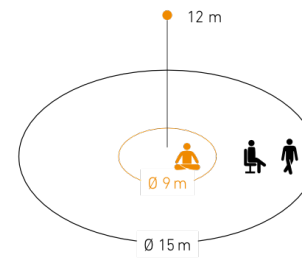
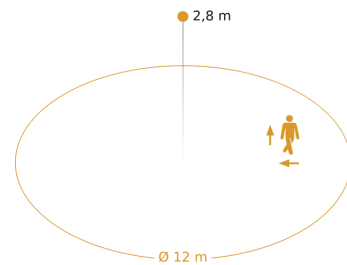
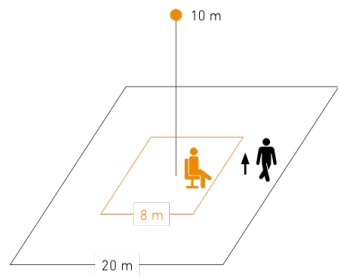
○ Single products



Individual products are configured separately and are not part of a group. They are part of the network and forward data within the network accordingly, but their switching behavior is not linked to other products.

This means that each individual product switches individually when it detects movement, but not the neighboring products.

Control Pro II products

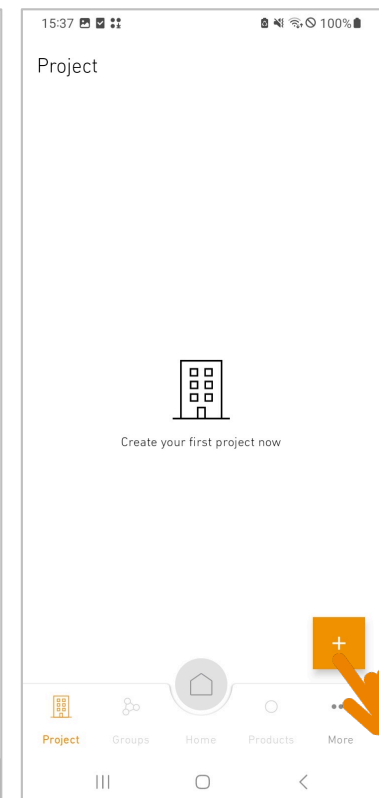
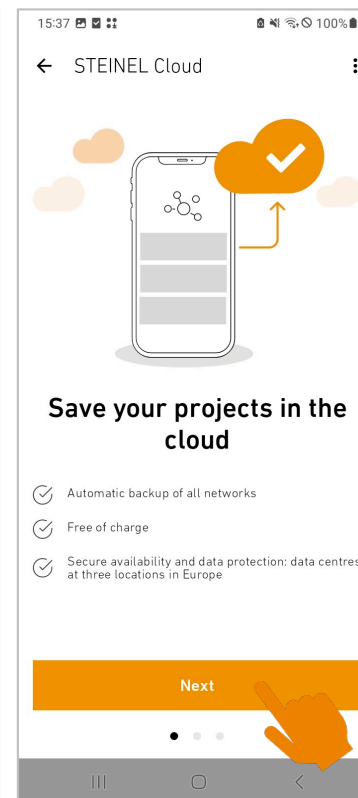
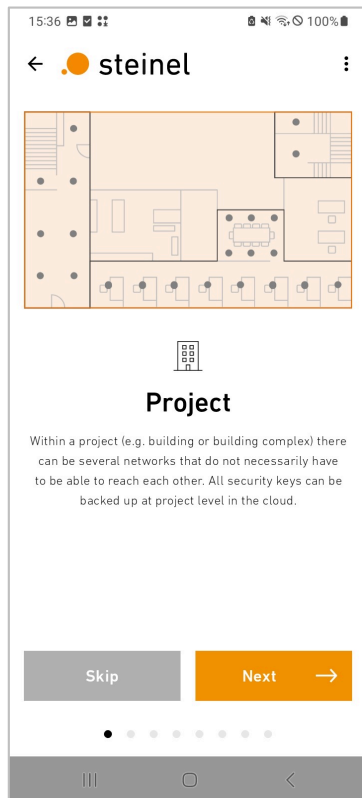
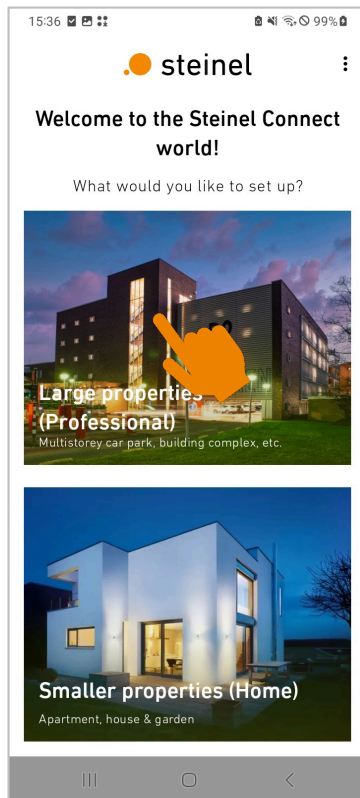


Commissioning Control Pro II Dali-2 APC

Setting up project



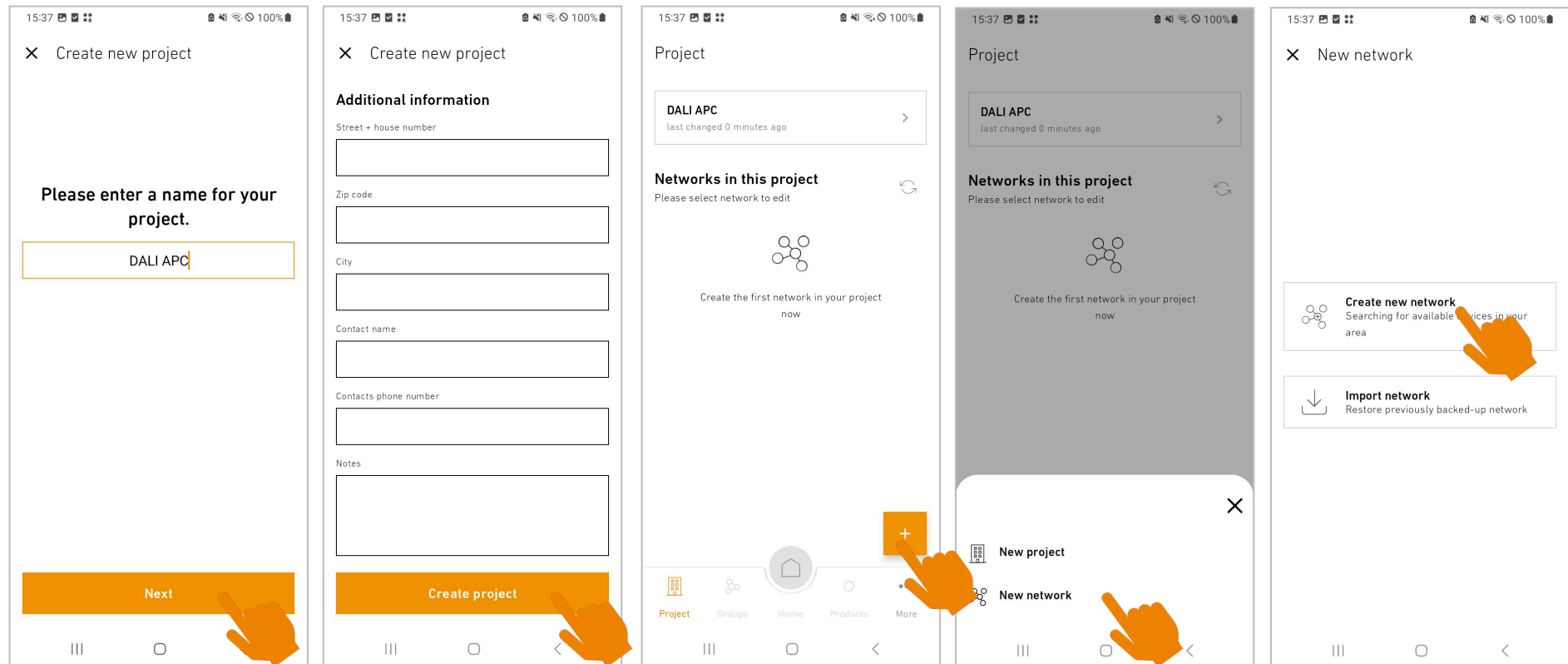
Choose „Large properties“	Read if you need to, otherwise skip	Choose “Project setup”	Connect with cloud to save projects online	Click „+“, create new project
---------------------------	-------------------------------------	------------------------	--	-------------------------------



Commissioning Control Pro II Dali-2 APC

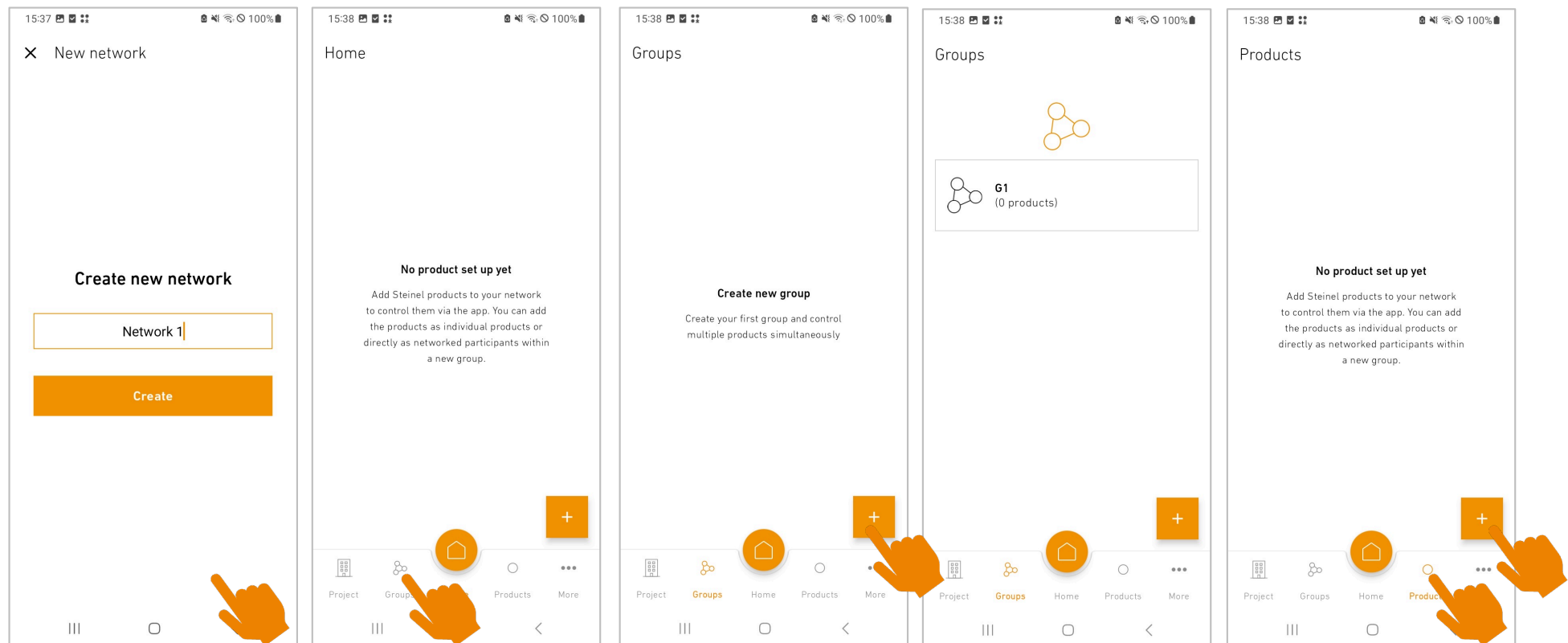
Creating project + network

Name the project	Additional information	Click "+", create new network	„New network“	„Create new network“
------------------	------------------------	-------------------------------	---------------	----------------------



Commissioning Control Pro II Dali-2 APC Network + creating groups+ adding product

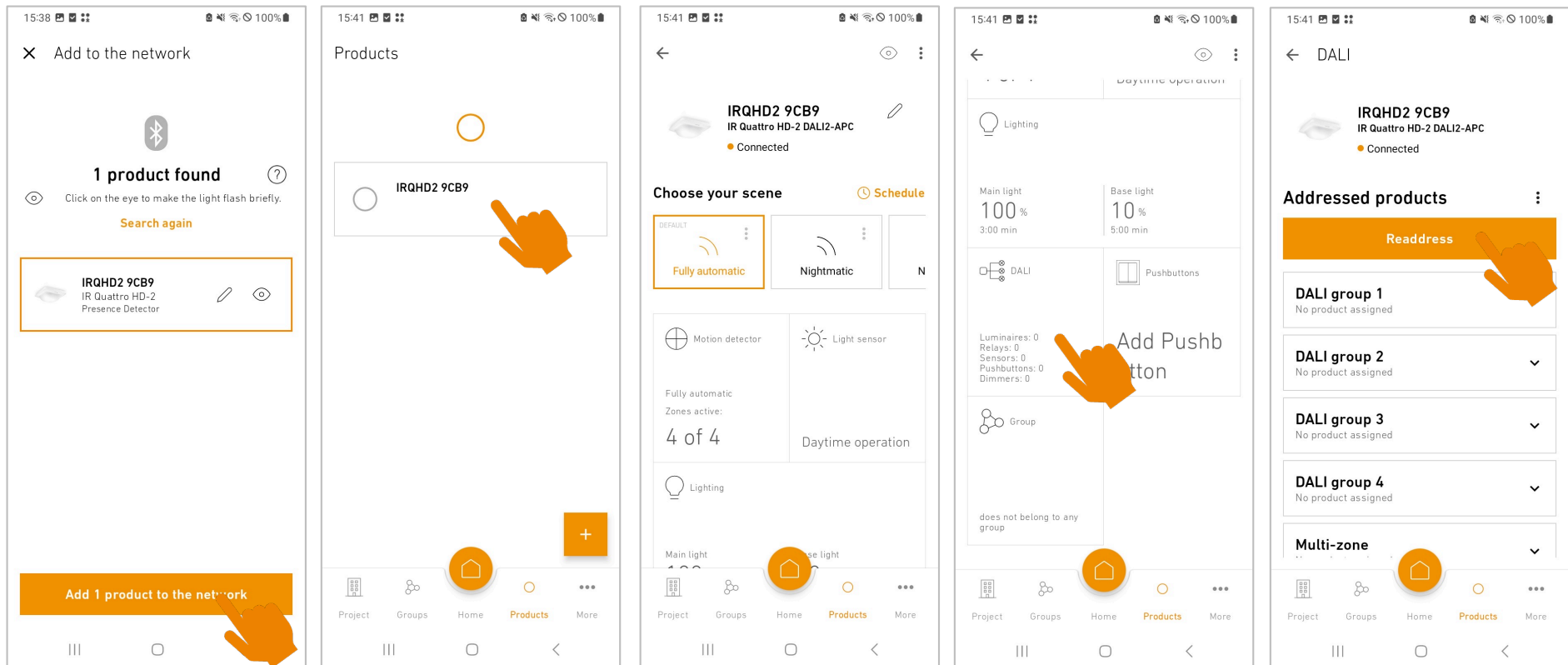
Name the network	Select tab „groups“	Click “+”	Create new group	Select tab „products“, click „+“
------------------	---------------------	-----------	------------------	-------------------------------------



Commissioning Control Pro II Dali-2 APC

Adding product + DALI addressing

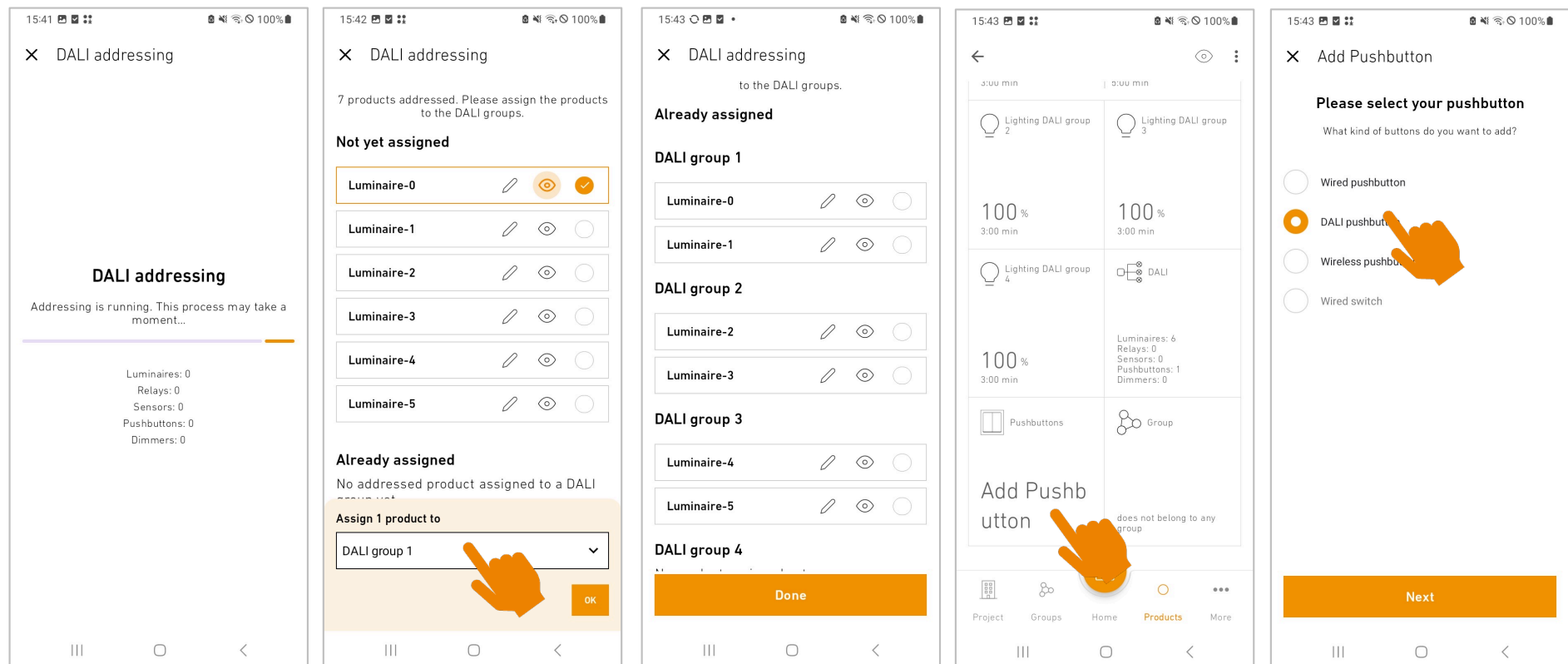
Choose your product, add to network	Choose tab „products“, click on added product	Scroll down	Choose „DALI“	„Readdress“
-------------------------------------	---	-------------	---------------	-------------



Commissioning Control Pro II Dali-2 APC

DALI addressing + pushbutton configuring

Wait until all products are addressed	Click on the eye to make the light flash, assign it to a group	Check again if necessary	Choose „add pushbutton“	Select pushbutton
---------------------------------------	--	--------------------------	-------------------------	-------------------



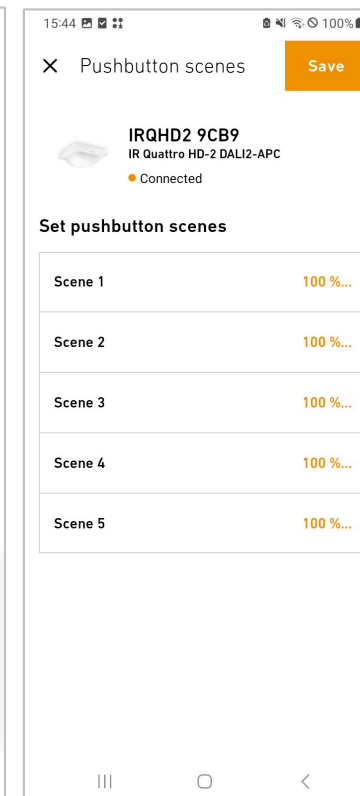
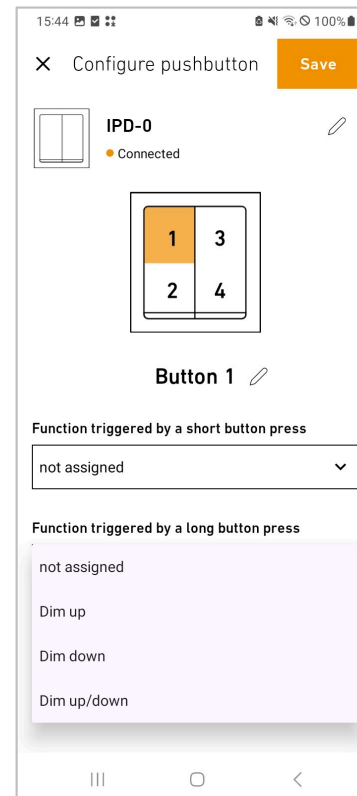
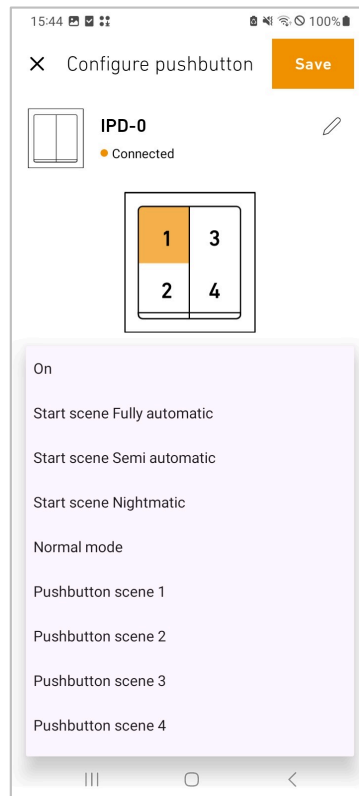
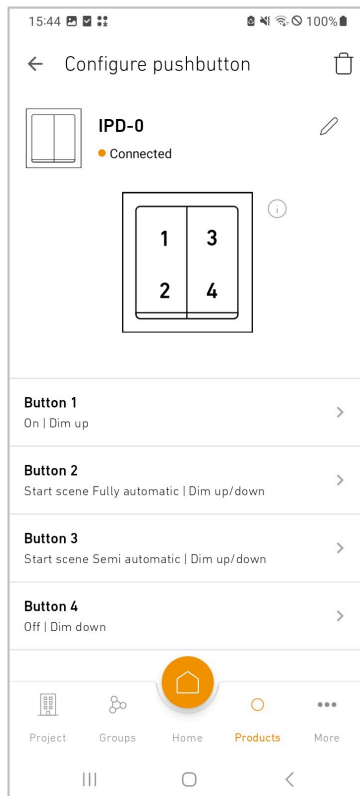
The screenshots illustrate the following steps:

- Step 1:** The app shows 'DALI addressing' in progress. A progress bar is at the bottom, and statistics show 0 luminaires, relays, sensors, pushbuttons, and dimmers.
- Step 2:** 7 products are addressed. A list of 'Luminaire-0' through 'Luminaire-5' is shown. An orange hand icon points to the eye icon of 'Luminaire-0'.
- Step 3:** Products are assigned to DALI groups. A dropdown menu shows 'DALI group 1' selected. An orange hand icon points to the dropdown. A 'Done' button is visible at the bottom.
- Step 4:** The 'Add Pushbutton' screen is shown. An orange hand icon points to the 'Add Pushbutton' button. The screen displays a grid of DALI groups with their status (e.g., 100% brightness, 3:00 min timer).
- Step 5:** The 'Please select your pushbutton' screen is shown. An orange hand icon points to the 'DALI pushbutton' option. Other options include 'Wired pushbutton', 'Wireless pushbutton', and 'Wired switch'. A 'Next' button is at the bottom.

Commissioning Control Pro II Dali-2 APC

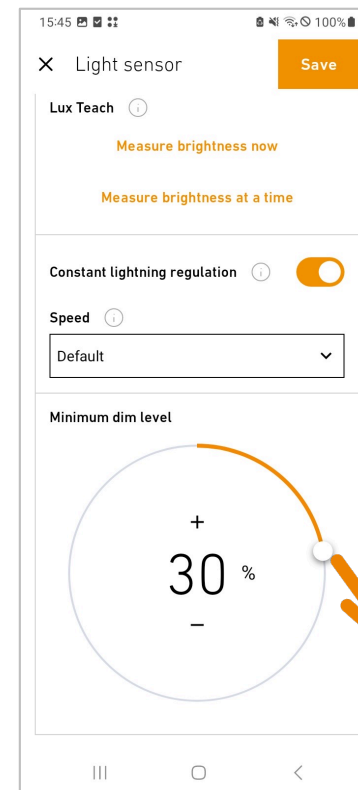
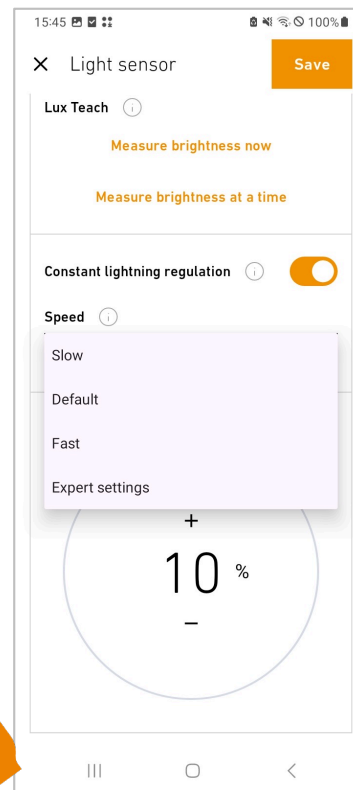
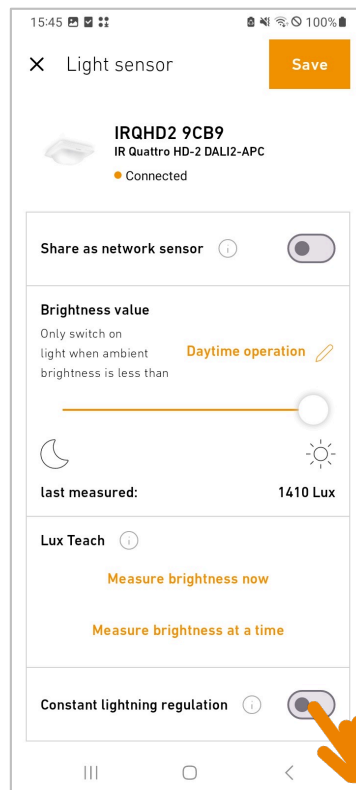
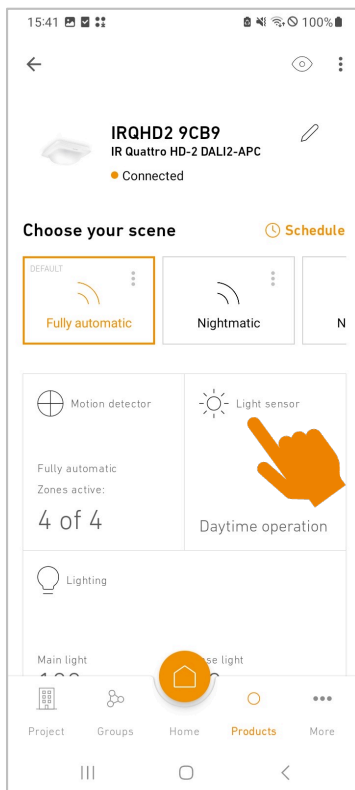
Configure pushbutton

Configure pushbutton	Functions short button press	Functions long button press	Set pushbutton scenes
----------------------	------------------------------	-----------------------------	-----------------------



Commissioning Control Pro II Dali-2 APC CLC

Choose „Light sensor“	Activate CLC	Adjust speed	Adjust minimum dim level
-----------------------	--------------	--------------	--------------------------



The CLC is acitvable for each lighting channel on its own

Commissioning Control Pro II Dali-2 APC Schedule

Choose „Schedule“	Click „+“	Choose scenes and days and when the times when they are active	Additional time block as example	Overview of time blocks
